

UNITED STATES PUBLIC LAND SURVEY SECTION OR QUARTER SECTION CORNER RECORD

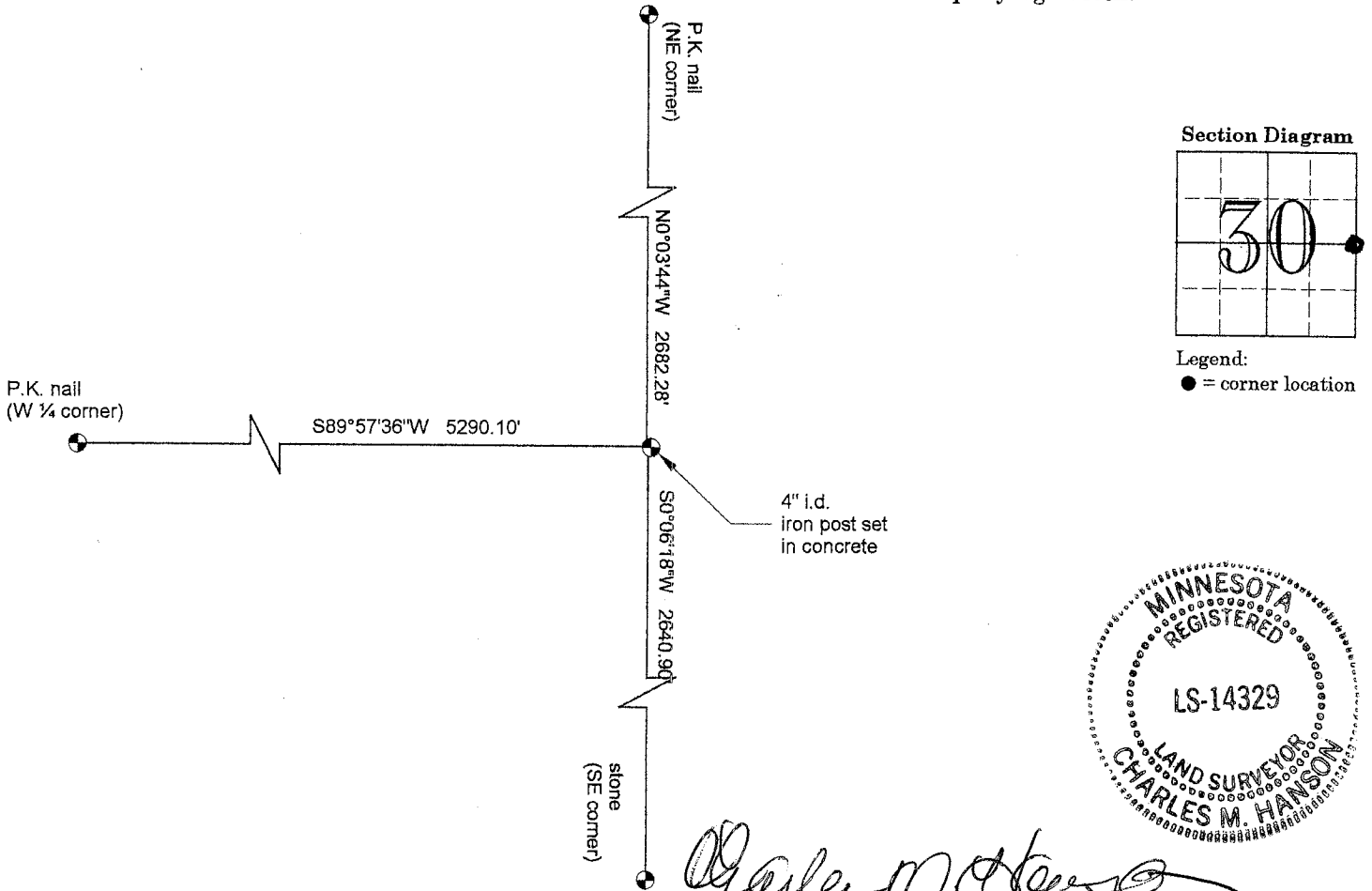
(establish)
(restore)

I hereby certify that on the 18th day of August, 2009, I did (find) the E¹/₄ corner of Section 30, Township 105, Range 40, West of the 5th Principal Meridian which was evidenced by a 4" i.d. iron post set in concrete

and I further certify that to perpetuate the location of such corner I did at the exact location thereof place a permanent marker consisting of N/A

I further certify that I established reference or witness monuments consisting of NE cor., SE cor. and W¹/₄ cor. of Sec. 30

which reference or witness monuments are located as shown on the accompanying sketch.



Charles M. Hanson
Charles M. Hanson
Registration No. 14329 State of Minnesota

Dated at Sioux Falls, South Dakota on this 21st day of August, 2009